

PRACTICAL INFORMATION



RCIS 2024

18th. International Conference on Research
Challenges in Information Science, 14-17 May

■ Guimarães, Portugal

HOW TO GET TO GUIMARÃES

Guimarães is located in northwestern Portugal, approximately 350km north of the capital, Lisbon, and about 50km from the second largest city, Oporto.

BY PLANE

The nearest airport is Francisco Sá Carneiro International Airport, located in Oporto about 50km from Guimarães. From the airport you can reach Guimarães in the following ways:

- Take the shuttle from the Airport to Guimarães. Costs 9€ the single trip. Timetables are available at [GetBus](#)
- Take the Metro to the Campanhã metro/train station in Oporto and then get a suburban train to Guimarães. Train frequency from Oporto's Campanhã station to Guimarães are around 1 train per hour, and cost should be 3,25€. Schedules are available at www.cp.pt
- Take the taxi from the Airport to Guimarães. The trip should cost around 60 € (at night prices are higher). Ask the taxi driver for a budget before getting the ride.
- Take an Uber/Bolt from the Airport to Guimarães. Depending on the app used the cost might change but should be around 40 - 45€.



BY CAR

Using the current network of motorways, Oporto can be reached from Guimarães in 30 minutes via the A7 and A3. Braga is a mere 15 minutes away on the A11 motorway. Taking the A11 and A3 northbound, Vigo, Spain is 90 minutes away, and Lisbon is 3 hours to south, via the A7, A3 and A1 motorways.

Various private bus lines link Guimarães to all major cities in Portugal, with both non-stop and local service. The nearest airport is Francisco Sá Carneiro International Airport, located in the Oporto suburb of Maia, about 50km from Guimarães. Using the A7 and A3 motorways, the airport can be reached in approximately 35 minutes.

BY TRAIN

Guimarães is part of the modern network of trains that link all cities in Portugal. All-stop service between Guimarães and Oporto takes approximately 60 minutes. To see if non-stop service exists between a certain location and Guimarães, check the website of the national railway company (Caminhos de Ferro Portugueses) at www.cp.pt.

Timetables are available at: www.cp.pt

CONFERENCE VENUE

The conference will be hosted at the Centro Cultural Vila Flor (CCVF) in Guimarães. Guimarães' historic centre, a UNESCO World Heritage Site, is an exceptionally well-preserved and truthful example of a mediaeval settlement's transformation into a contemporary municipality.

It is a city with a distinct atmosphere and an amazing viewpoint on history, food, and wine. In addition to the cutting-edge scientific program, the conference will offer a lively social program that will encourage informal interactions among participants as well as a great experience in this lovely mediaeval city.



The CCVF opened in 2005 after major renovations to the Vila Flor Palace and gardens, which were created in the 18th century. A new area was also constructed to house two auditoriums, as well as catering, exhibition, and administrative areas.

The CCVF is easily accessible by foot from most hotels due to its proximity to the historical city centre. Alternatively, if you are staying outside of the city centre, you can take the bus or train (the train station is 5 minutes away on foot).

More information can be found here: <https://www.ccvf.pt/en/espacos>

Av. Dom Afonso Henriques, 701
4810-431 Guimarães www.ccvf.pt
GPS: 41.43695 , -8.29554
[Google Maps Location](#)

CONFERENCE REGISTRATION

The registration desk is in the Small Auditorium lobby, at the Vila Flor Cultural Centre.

COFFEE-BREAK LOCATION

All the coffee-breaks will be available in the foyer of the small auditorium (including in the workshops' day).

LUNCH LOCATION

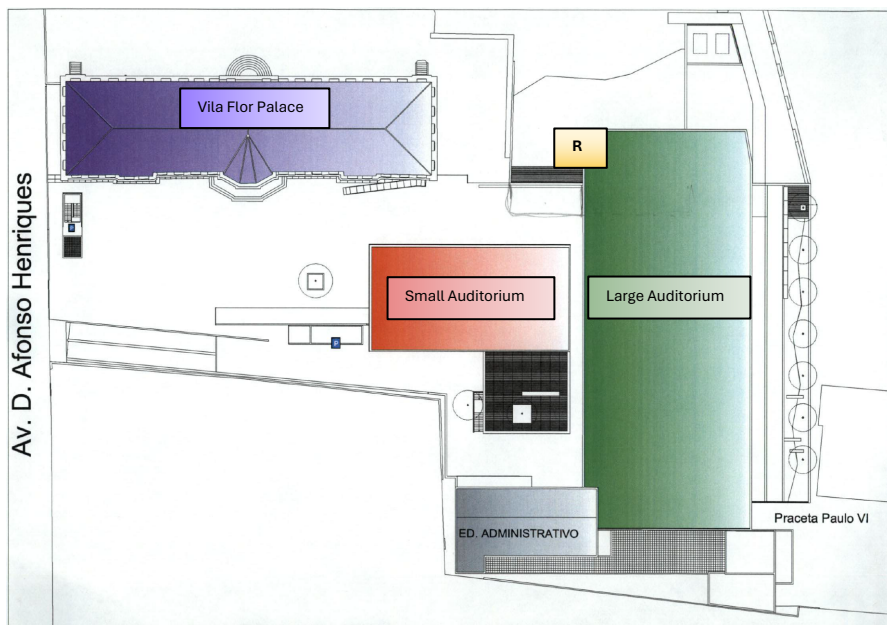
All lunches will happen in the restaurant of the Vila Flor Cultural Centre. The restaurant location is identified with a **R** in the map below (under the large auditorium).

WI-FI INFORMATION

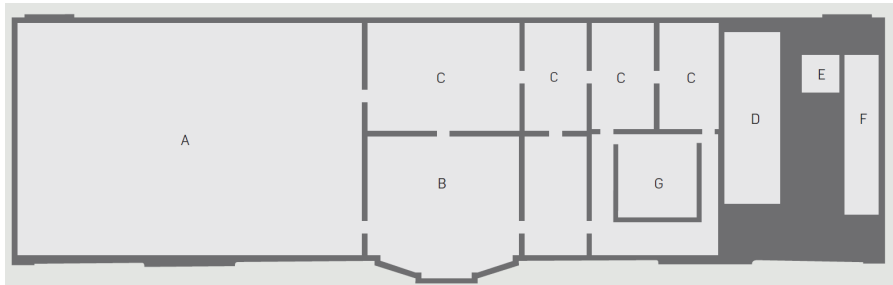
Network: CCVF_eventos

Password: Eventos22

VILA FLOR CULTURAL CENTRE MAP

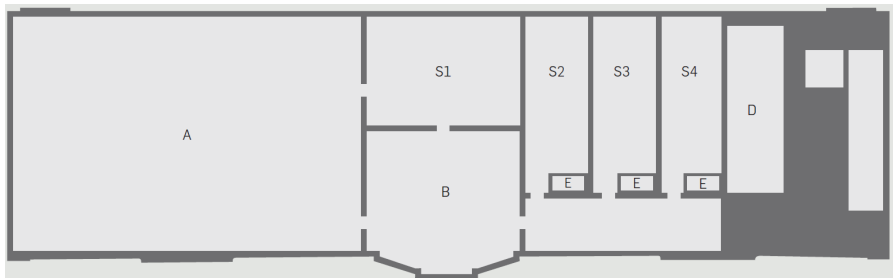


VILA FLOR PALACE – GROUND FLOOR



- A – Exhibitions area
- B – Reception
- C – Culture and Tourism Services
- D – WC
- E – Elevator
- F – Stairs
- G – Meeting Room

VILA FLOR PALACE – 1ST FLOOR



- A – Exhibitions area
- B – Room S1 Foyer
- S1 – Room S1
- S2 – Room S2
- S3 – Room S3
- S4 – Room S4
- D – WC

SOCIAL EVENTS

During RCIS'2024, several social events are being organized. If you have a full or main conference registration (regular or student), you will be able to attend them.

CONFERENCE WALKING TOUR



A walking tour is organized for you to get to know the Guimarães city centre. It will happen on 14 May 2024 from 18h to 20h.

CONFERENCE ICEBREAKER

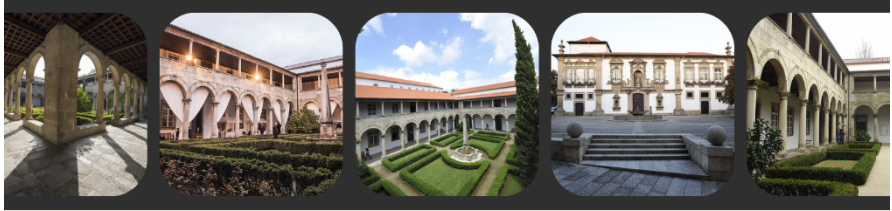


An icebreaker moment will be held at Ramada 1930 Bar - in Guimarães City Centre. It will happen on 14 May 2024 from 20h to 22h.

[Google Maps Location](#)

Ramada 1930
R. da Ramada 52,
4810-445 Guimarães

CONFERENCE RECEPTION



The conference reception will happen on the CM Guimarães (City Council) Cloisters on 15 May 2024 between 19h:30 and 21h:30.

[Google Maps Location](#)

Câmara Municipal de Guimarães
Largo Cónego José Maria Gomes 4,
4804-534 Guimarães

CONFERENCE DINNER



The conference dinner will take place in Pousada Santa Marinha da Costa (Pousada Mosteiro Guimarães), a former XII Century Augustin Monastery, which after being rebuilt and restored, received in 1985 the National Architectural Prize.

Nowadays, this historic luxury hotel has beautiful gardens, a magnificent stone staircase, and an artificial lake among the trees.

During the night, admire the rich Portuguese tiles, the cloisters and terraces overlooking the city, and enjoy the magnificent cuisine and wines.

Buses leave at 19:45 (local time). Meeting Point: Conference Venue (CCVF)

[Google Maps Location](#)

Pousada Mosteiro de Guimarães
Largo Domingos Leite de Castro, Lugar da Costa,
4810-011 Guimarães